



Part List, HVC/Electrical

Applicable for Z200, Z208

NOTE: Latest information (latest Rev.) are marked in [Blue](#).

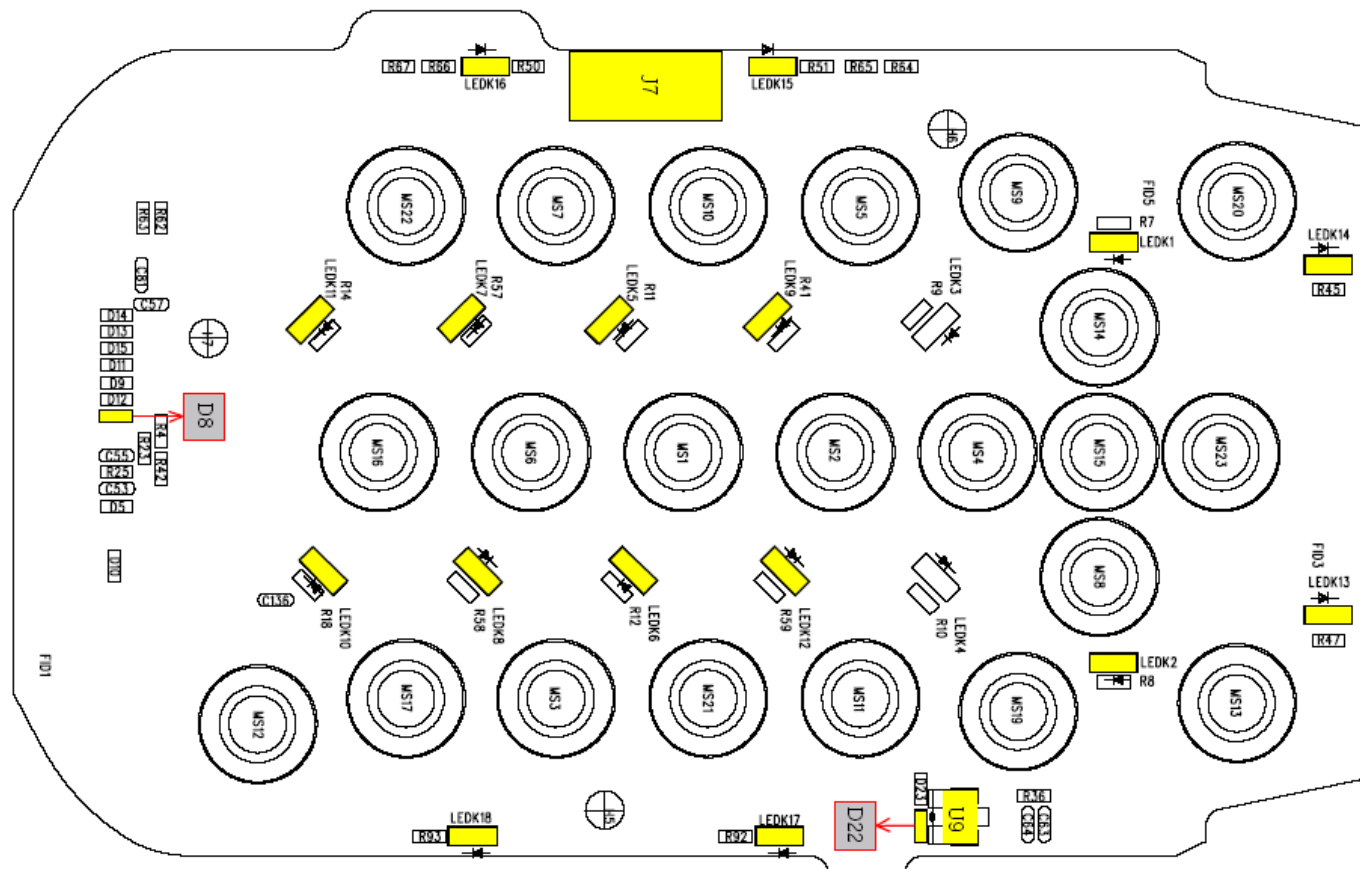
Contents

1	Mounting Drawing.....	2
1.1	Main board (Primary Side).....	2
1.2	Main board (Secondary Side).....	3
1.3	Z200 Parts list.....	4
2	Revision History	5

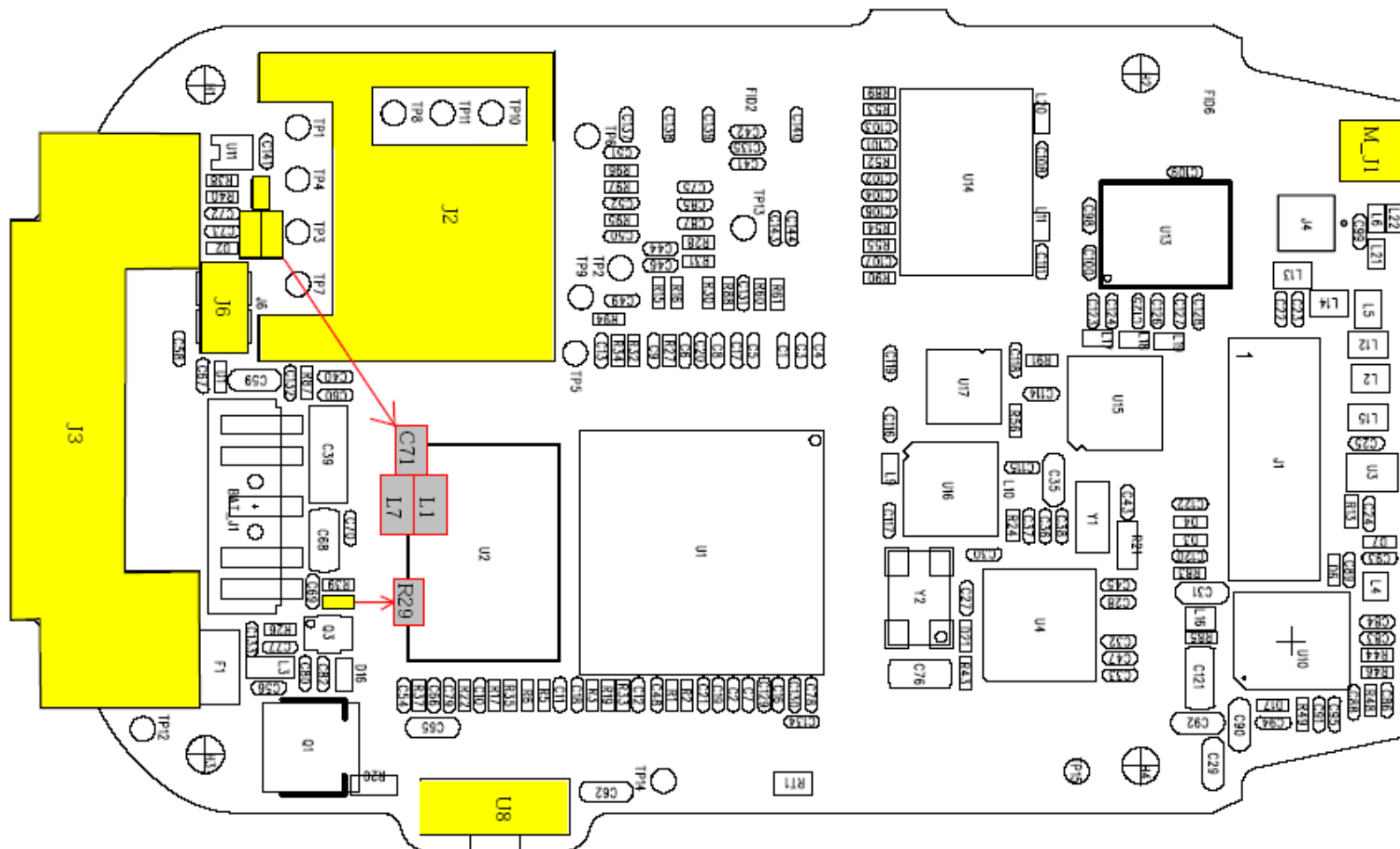
1 Mounting Drawing

The mounting drawings show the components position on the printed board.

1.1 Main board (Primary Side)



1.2 Main board (Secondary Side)





1.3 Z200 Parts list

The Part List contains only components that are possible to replace on the main board.

Pos. number refers to the components position number on the board.

Parts available to order will be found in the Web Shop.

Pos.	Description	Part Number	Qty	Comments
LEDK1~2, LEDK5~18	Keypad Led	A/1090511986601W	16	
U8	IrDA	A/13210040000099	1	
U9	Hall sensor	A/111DMLX9024H7B	1	
M_J1	Antenna connector	A/1142000101I451	1	
J2	Sim Reader	A/1140340613B13U	1	
J3	System connector	A/1140661101893H	1	
J6	Microphone connector	A/1141730201F628	1	
J7	Sidekey PCB	A/1212200P0540A7	1	
L1, L7	Inductor	A/10342601108A09	2	
C71	Capasitor	A/1020110353KA00	1	
R29	Resistor 1M ohm	A/101011004EJA00	1	
D8, D22	Varistor	A/1321002000033E	2	

2 Revision History

Rev.	Date	Changes / Comments
A	2003-11-13	First release
B	2004-03-03	Components L1, L7, C71 added
C	2004-07-28	Component R29
D	2004-08-27	Component D8/D22 Varistor added.

NOTE: The latest made changes (found in the latest Rev) are marked in **BLUE**. This will make it easier to find the relevant changes from last Rev. So this does not mean that they are more important than other information what so ever, only a way to make it easier to find it.